



Sunsight™

Alignment Solutions



Site	Sector	Antenna Position
Lake Ridge Tower	Alpha (1)	gsm1
Azimuth	Target	Actual
Downtilt	119	285 (GPS)
Roll	0.2	0.7
Height	1.1	0.9
Latitude	113.0	33.5
Longitude	38.680000	38.682481
	-77.280000	-77.258613

Reject
Save

Captured 2015-04-09 22:59:20
Site: Lake Ridge Tower
Sector: Alpha (1)
Ant. Posn: gsm1

Tel: +1 (321) 244-9443

sales@sunsight.com

www.sunsight.com

AntennAlign Alignment Tool (AAT)

Field-proven, High-quality Antenna Alignment Solutions

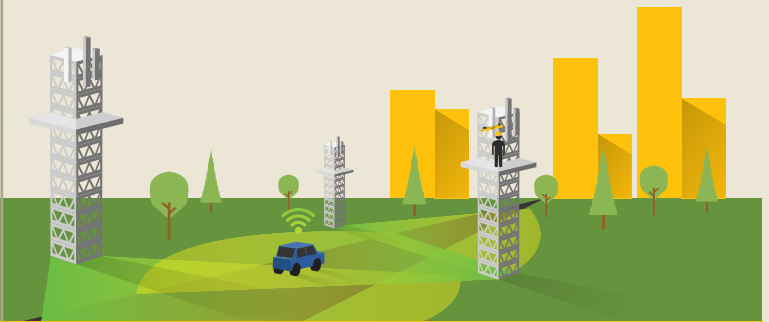
- ✓ Align antenna azimuth, tilt, roll and height better than carriers' specifications
- ✓ Full-size cellular panel antennas, all Ericsson AIR antennas, small cell housings, and the ability to capture azimuth from the ground
- ✓ Create alignment report for individual antennas or entire site. Includes azimuth, tilt, roll, height and geographic location (Lat/Long)
- ✓ Send reports with all antenna measurements right from the site using any device (Android, iOS, Windows, etc)
- ✓ No additional software, no post processing, no cables required
- ✓ Lightest instrument on the market at 3.6 pounds; fast, easy to use mount at 2 pounds
- ✓ Most durable unit available; RF shielded, weather proofed aluminum housing; wet, cold, extreme heat are no match for the AAT-30
- ✓ Measuring position for RF Panel Alignment on the tower or from the ground, Small Cell to Ericsson Air antennas, and MW Path Alignment – we do it all

www.sunsight.com

Other Alignment Methods



Sunsight Alignment Tools



Setting alignment correctly with the worlds most accurate alignment tool eliminates return trips.

Technical Specifications

Accuracy:

Azimuth R99*	.75°
Azimuth RMS*	.3°
Tilt/Roll	.1°
Horizontal Position	30 cm (SBAS)
Vertical Position (MSL)	60 cm (SBAS)
Altitude w/ Laser Rangefinder	30 cm (AGL)
GPS Receiver	540 channel
Satellite Constellations	GPS and GLONASS

Battery:

Type	LiFePO4
Life	9 hrs
Charge Time	1.5 hrs

Weight:

Unit	3.6 lbs; 1.6 kg
Side Mount	< 2 lbs; 0.9 kg
Unit Dimensions	17"x3.8"x1.7" / 43.2cmx9.6cmx4.3cm

Environment and Connectivity:

Op Temp	-40°C to 70°C (-40°F to 158°F)
Storage Temp	-40°C to 85°C (-40°F to 185°F)
Humidity	95%
Communications	802.11b,g,n
Output	PDF, CSV, HTML, Proprietary encrypted format
Memory	4 GB
Industry Certifications	CE and FCC

Accessories

Part #:

Description:

P/N 2100	Air Mount (Required for Ericsson Air11, Air21, and Air32 alignments)
P/N 2101	Small Cell Mount – round mount for tubular and tapered antennas.
P/N 3300	Azimuth Scope Kit – allows AAT user to measure antenna azimuth from the ground within 2°. Especially useful for quick audits for towers with T-booms, Powerpoles, or Osprey nests where climbing and installing AAT on panel antenna is not permitted.
P/N 3301	Laser Rangefinder ('Laser Tape Drop') – enables AAT to capture Above Ground Level (AGL) height to +/- 1 ft. (0.3 meters) Measurements can be used in lieu of a traditional tape drop.
P/N 4100	Browser Enabled IP68 Waterproof Rugged Android smartphone.
P/N 7500	Hard Case watertight, crushproof and dustproof.

*RMS or root mean square is 1 sigma or (68%) accuracy specification, not meaningful for QoS test equipment. R99 is 3 sigma (99.7%) accuracy within stated specification about 3 times RMS specification. SunSight AATs are more accurate and more reliable.

